

## **PALMA SOLA TRACE EVACUATION ZONES**

### **August 1, 2022**

Palma Sola Trace was previously entirely in Evacuation Zone B. The northern part of PST was recently changed to Zone A. Here is the new map and a recap of the reasoning behind the change.

During the beginning of 2020 Palma Sola Trace was put into a new SLOSH (Sea, Lake, and Overland Surges from Hurricanes) basin. New LiDAR (satellite imagery using lasers) data was captured for the region and used for the updated Manatee County Evacuation Zone maps. For public safety, any areas that would become an “island” (possibly surrounded by water without public street entry or exit) was put into a higher level – Zone A. This is the case for the part of Palma Sola Trace north of Palma Sola Creek. Palma Sola Creek flooding could potentially result in Bridlecrest Lane being unavailable to exit the community for residents north of the creek.

The Evacuation Zone does not have any bearing on insurance rates and is done for safety purposes only.

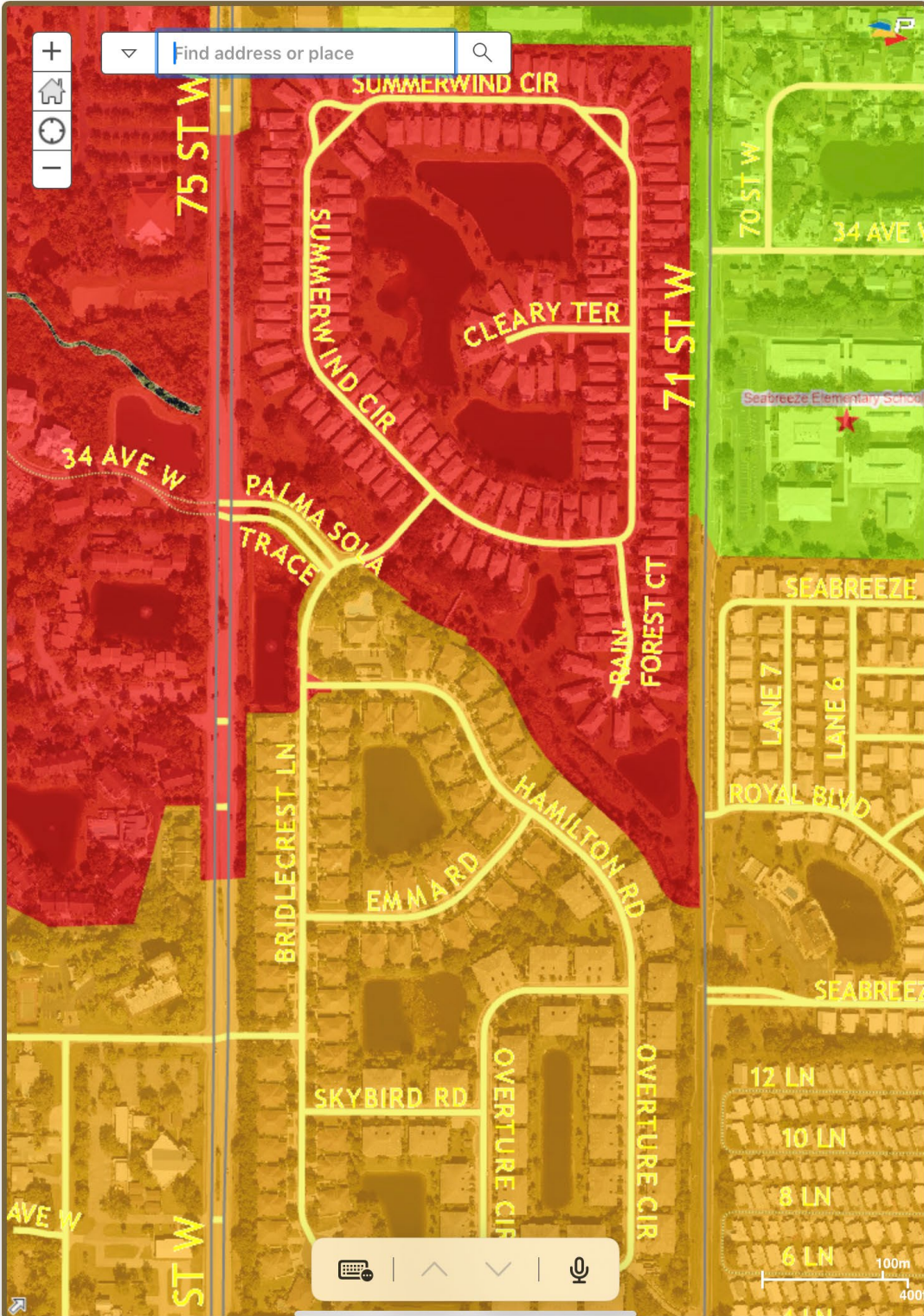
The Red Area is Zone A.

The Orange Area is Zone B.

The nearest shelter is Sea Breeze Elementary School on 71<sup>st</sup> St. indicated by a Red Star on the map.



Widgets



Results

